

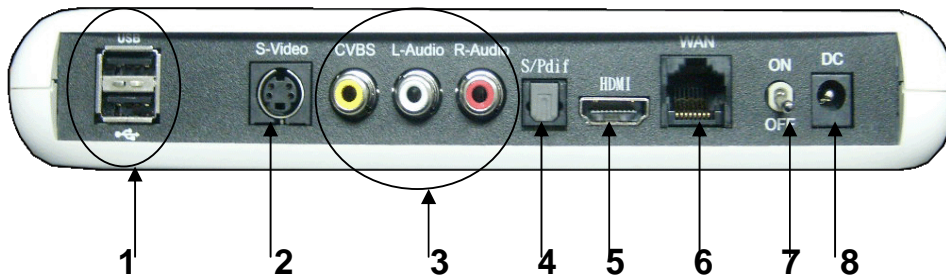
IPTV User's Manual

Mesh Network Systems (MNS) Receiver

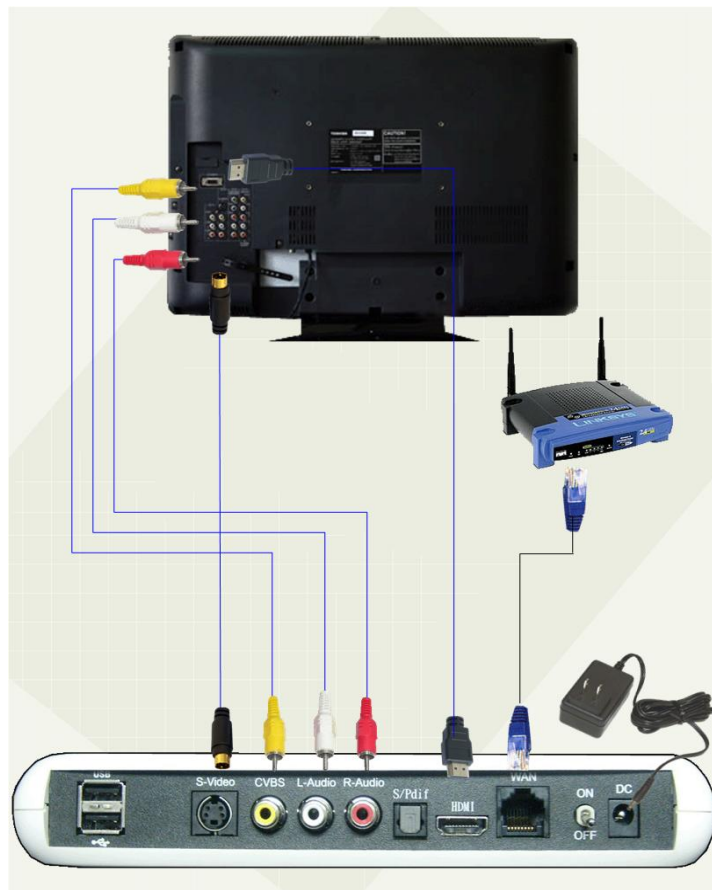

The logo for Asia Super Channel (ASC). It features the letters 'ASC' in a large, stylized, outlined font. Below the letters, the words 'Asia Super Channel' are written in a smaller, sans-serif font.

MNS (Mesh Network Systems) STB User guide

Layout & Connection

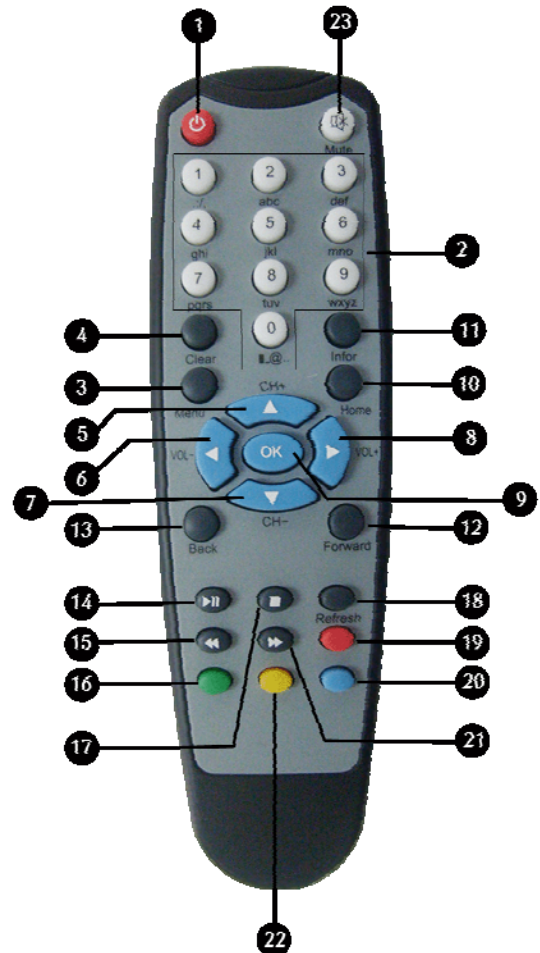


1. USB Ports
2. S-Video
3. Video & Audio
4. S/Pdif
5. HDMI
6. Lan(RJ45)
7. Switch
8. Power Supply (DC output)



Remote Control Unit (RCU) Layout

1. **POWER**: switch on/off the Set Top Box (STB)
2. **0-9** : input channel, password, channel sort, number or Alphabet required by some function
3. **Menu (Setup)** : go to Setup page
4. **Clear** : dot (.) for entering dot-decimal notation
5. **Arrow up** : increase channel number
6. **Arrow left** : decrease volume level
7. **Arrow down** : decrease channel number
8. **Arrow right** : increase volume level
9. **OK** : to confirm the chosen function
10. **Home**: back to Main Menu page
11. **Info** : not use
12. **Forward (EPG)**: not use
13. **Back (Stop)**: go to the Channel Menu page
14. **Play/Pause** : not use
15. **Rewind** : not use
16. **Green key** : not use
17. **Stop** : not use
18. **Refresh** : not use
19. **Red key** : not use
20. **Forward** : not use
21. **Blue key** : not use
22. **Yellow key** : not use
23. **MUTE** : to stop audio output



1. How to use this product

The installation steps are list below:

- Step 1:** Connect the LAN cable (RJ-45) from the ADSL Router or Switch to the LAN port in the rear of the Set Top Box (STB).
- Step 2:** Connect the video and audio output connector on the STB to the video and audio input connector on the TV set. If choose S-Video or HDMI output, connect the S-Video output to the S-Video input on the TV or HDMI output to HDMI TV set input.
- Step 3:** (Option) if want to use the audio device with SPDIF connector, connect the SPDIF with optical cable.
- Step 4:** Connect the power plug to the power supply device.
- Step 5:** Turn on the STB power switch. The STB will show loading page on the screen (Figure 1).

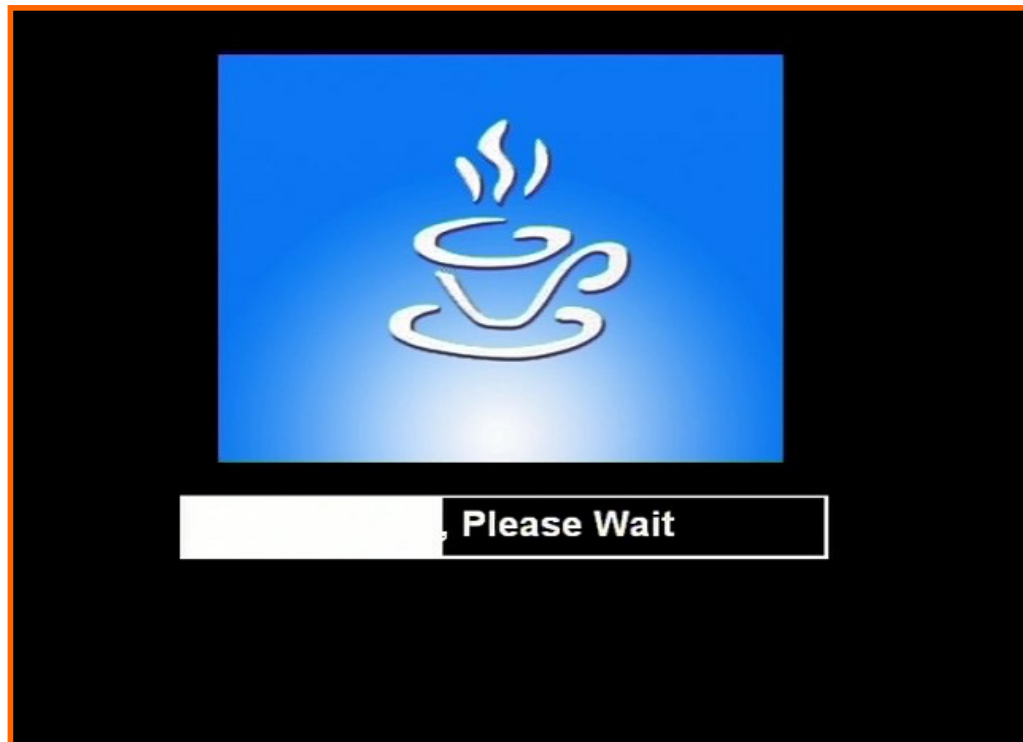


Figure 1

2. How to view Live Channel

Step 1: Turn on the Set Top Box and wait until the screen show Main Menu (Figure 2).
Press "OK" on the remote control to access Live Channel.



Figure 2

Step 2: Channel list with Freeview Channel Bar will appear, use arrow up / down on the remote control to select channel group and press OK to choose the channel group.
(Figure 3, 3A, 3B)

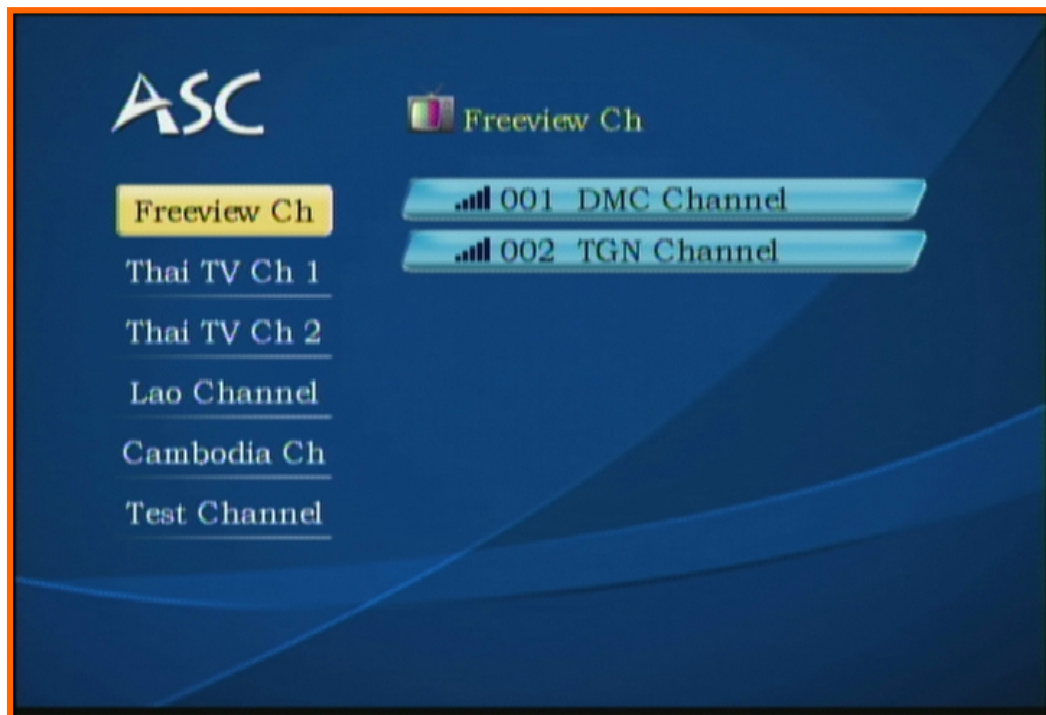


Figure 3



Figure 3A



Figure 3B

Step 3: Use the Down Arrow Key to choose other channel group on the menu.

ASC Set Top Box is pre-programmed for a self configuration. In very rare case if Asia Super Channel screen in Figure 2 does not appears. You can follow the Network Setup to complete the configuration manually.

3. Network Setup Menu

When turned on the Set Top Box, if the error message appears or the display is in black and white you can use the Right Arrow to choose “Setting Page” for a System Setup (Figure 4). This System Setup page can also be accessible from the Main Menu in Figure 2.



Figure 4

Step 1: Press “Setup (Menu)” key on the remote control or selecting “Setting Page” from the previous screen to setup the System as shown in Figure 4. Press arrow down on the remote control to Network Setup menu then press OK.

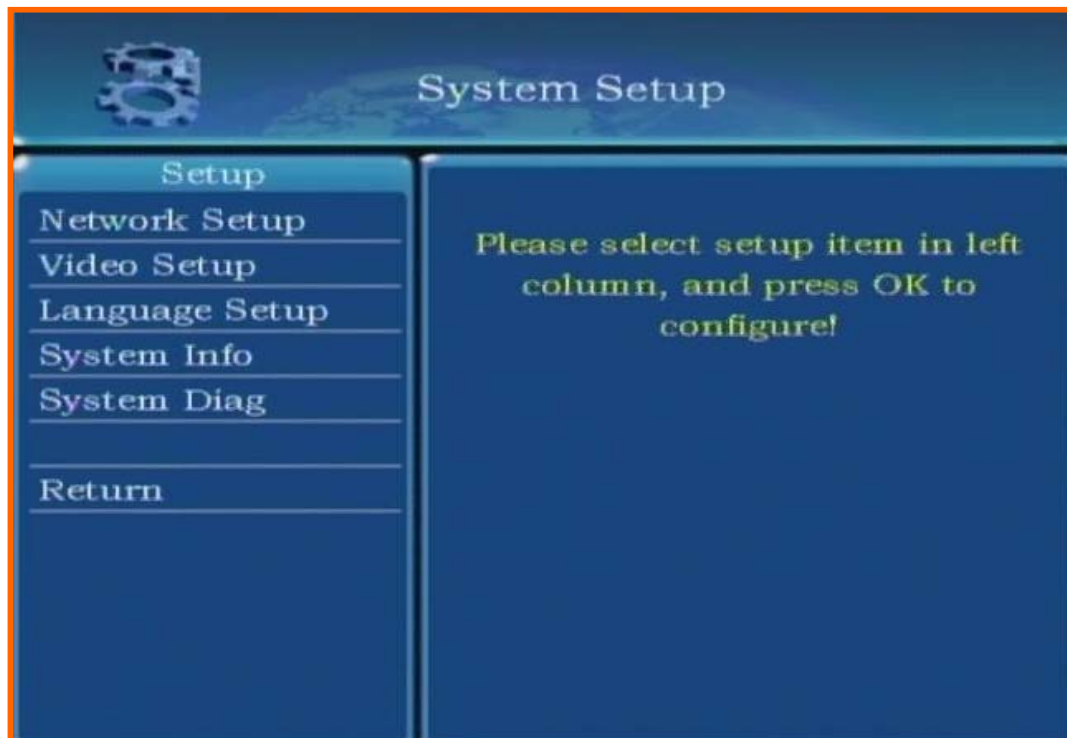


Figure 5

Step 2: If the STB received the correct IP from the router the screen in Figure 6 (below) will appear. Save the network configuration by move the arrow on the remote control to “Save” and reboot the STB. (You can also input your own Static IP Address by enter the IP Address from the remote control).

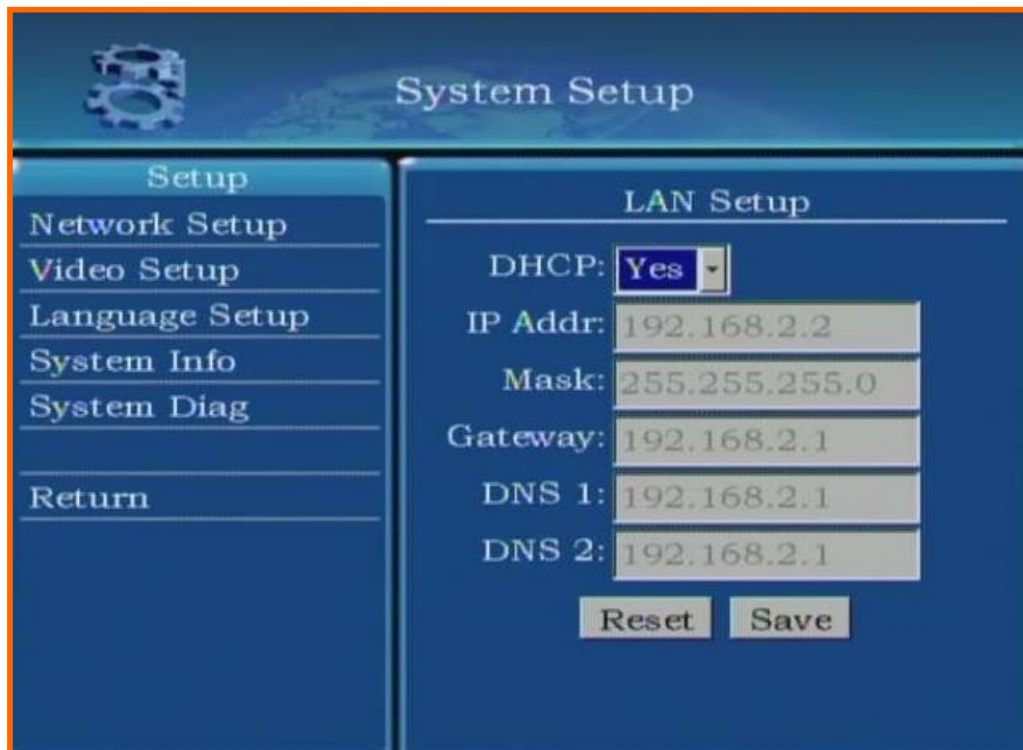


Figure 6

Step 3: Change the video format to PAL and save the setting. (Figure 7)



Figure 7

Step 5: Change the language to English and save the setting (Figure 8)



Figure 8

After finished the System Setup you may save the settings. The STB will ask you to reboot and resume the operation as shown on Figure 1.

Step 6: Check the system info. (Figure 9)



Figure 9

Step 7: Check the system diagnostic. (Figure 10). You can use the system diagnostic to verify if your Set Top Box is properly connected to your home internet network.

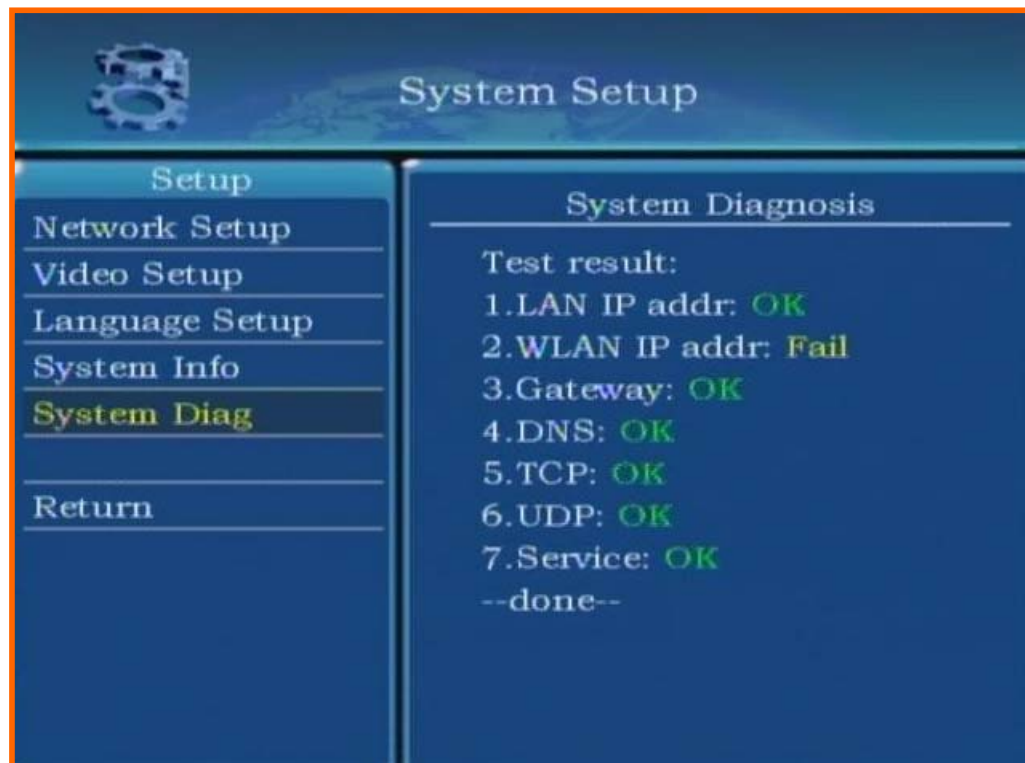


Figure 10

NOTE: System Diagnosis - WLAN IP addr: Fail
It is OK because we do not use the wireless USB adapter.

THAILIVE.TV 68 Campbell St Surry Hills NSW Australia 2010. Ph: 0(2) 8064-2557
Mob 0433-465-090
www.thailive.tv EMAIL: info@thailive.tv SKYPE:
THAILIVE.TV